



# Citysafe Plan 2021 - 2024



## Foreword



As the first black woman to be directly elected as a Mayor in the UK, I am passionate about creating safe communities where everyone, regardless of their identity, can live free from the fear of crime. I am therefore delighted to present Liverpool's Community Safety Plan, which reports on what the Citysafe Partnership has achieved and what we will deliver over the next three years. I am committed to tackling Violence Against Women and Girls and Hate Crime, which will help build a better, fairer city for all. The voluntary and community sector are key members of our Partnership, and we will continue to work together to support our communities, listening to the voices of victims and survivors to ensure services support them to recover and thrive. We continue to believe in a preventative and whole family approach – not just treating victims, perpetrators and their children as individuals, but as part of wider families and communities. Together, in partnership, we will make Liverpool a safer place.

### **Joanne Anderson**

Mayor of Liverpool



In 2020 we have faced perhaps the biggest challenge of our lives with the pandemic increasing inequalities and trapping our most vulnerable with their perpetrators. As the new Chair of Citysafe, I am proud to say I have full confidence in our dedicated and innovative Community Safety Partnership, with the experience and commitment to make our city one of the safest places to live, visit, work and invest in. The City Council, Police, Probation, Health, Fire Service, voluntary organisations and other partners are working closely together on all levels to support the City Plan Vision for Liverpool: a thriving, sustainable, fair city for everyone.

Please tell us what you think about our Plan – we want to hear your views and ideas. You can email us directly at [cohesionteam@liverpool.gov.uk](mailto:cohesionteam@liverpool.gov.uk)

### **Councillor Abdul Qadir**

Chair of Citysafe, Liverpool's Community Safety Partnership  
Cabinet member for Neighbourhoods and Communities, Liverpool City Council

## Our Vision

The Citysafe Partnership supports the City Plan Vision for a thriving, sustainable, fair city for everyone, through maintaining and delivering safer and stronger communities.

## Mission Statement

The Citysafe Partnership works together to prevent and reduce crime and disorder and improve community cohesion, supporting safe and thriving neighbourhoods. We work together for the benefit of everyone who lives, works, visits, studies and socialises in Liverpool.

## City Plan

Our Partnership supports the City Plan Vision for Liverpool: a thriving, sustainable, fair city for everyone. We share the commitments to provide collaborative leadership; empower our communities; promote equalities; listen to children and young people; and support achievement of the UN's 17 sustainable development goals.

Citysafe is delivering Aim 3 of the City Plan: to ensure safe and thriving neighbourhoods - all residents live in safe, inclusive and welcoming neighbourhoods, where people choose and aspire to live, raise their families and grow old. Public services are aligned with local need to reduce inequalities within the city.

## Priorities for 2021

Citysafe has three key priorities on which it is focussing its efforts, included in Liverpool's City Plan:



We will also continue to deliver our core business, which is:

- Vulnerable Victims
- Offender Management
- City Centre Community Safety Issues
- Place based partnership work
- Serious Organised Crime
- Alcohol and Drugs
- Possession and Use of Weapons

This Plan outlines how we have made progress towards these priorities, and what our objectives are for the future.

## Ways of Working

The set of principles the partnership will work to reflect those in the City Plan, and will help us to transform the way we work to meet the needs of our residents and deliver our vision for safe and strong communities.

- Using a public health approach - using scientific evidence to identify the causes of violence and deliver interventions that prevent it spreading
- Thinking about how we work as a system, not separate organisations
- Supporting the needs of the whole family, not victims, perpetrators and children in isolation
- Focus on early intervention and prevention – reducing the risk to children and families earlier in their lives

- Being trauma informed – recognising the impact of Adverse Childhood Experiences
- Addressing inequalities – supporting the most vulnerable.

## Community Engagement and Consultation

We will continue to use a variety of methods to involve our communities in the planning and delivery of our work. Through representation on commissioning panels, surveys and focus groups with service users, on line conversations and other methods we will continue to listen and respond to the people who live, work and study in Liverpool.

## Resources

The main investment in community safety is through our partners' mainstream budgets. The most sustainable changes will come through bending and combining these resources to increase the impact and value of what we deliver. In addition we continue to seek external funding to increase our capacity, pilot new ideas and supplement our stretched organisational budgets. All of the external funds we receive are committed on an annual basis which makes long term public health approaches very challenging, as well as impacting on wellbeing of staff due to a lack of job security. Current grants include:

- Crime and Disorder Grant
- Ministry of Justice Victim's Fund
- Late Night Levy
- Ministry of Justice Covid emergency funding
- Home Office Prevent and Counter Extremism grants
- Merseyside Violence Reduction Partnership funding.

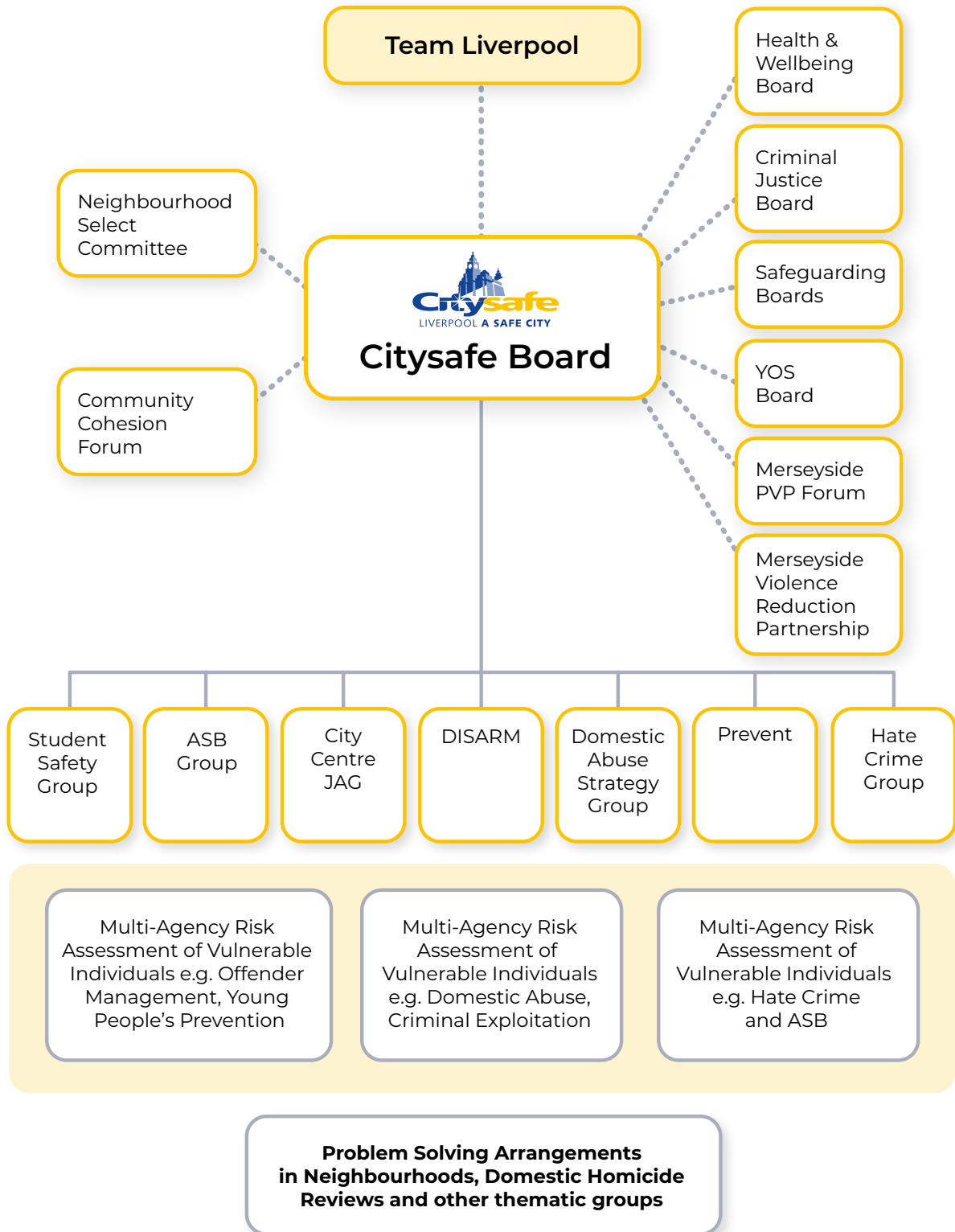
## Governance and Implementation

The Citysafe Board now reports to 'Team Liverpool' who have responsibility for the overall City Plan. This will ensure that our work complements developments across the City, and so helps address long term, systemic challenges facing the city.

We also regularly report to the City Council's Neighbourhood Select Committee, which is a public meeting where the Partnership's work can be scrutinised.

We will use our established structures and flex them to respond to new ways of working. Each of the priorities have a strategy or delivery plan which outlines key initiatives for the year and an investment programme, driven by the appropriate Strategy Group. These Groups deliver programmes of work for the partnership and are accountable to the Citysafe Board. The Citysafe structure is reviewed regularly to ensure that agencies are able to tackle the priorities identified for the city.

## Citysafe Structure 2021



## Domestic Abuse

Reducing domestic abuse is a priority for Liverpool. Unfortunately, Liverpool suffers high levels of reported domestic violence and abuse including domestic homicide. Along with the terrible human costs for victims, including life-long impacts on children, every year many millions of pounds of public money is spent on responding to the problem instead of being used to improve lives for our citizens.

In 2018 a Domestic Abuse Strategy was written, outlining a partnership approach to tackling domestic abuse. Partners worked together to develop a multi-agency action plan using five pledges to:

1. Put victims, including children, at the centre of our response to domestic abuse
2. Improve prevention through awareness raising and education
3. Safeguard individuals, children and families to prevent serious risk of harm, developing 'Early Help' pathways to support
4. Challenge and change perpetrators' behaviour
5. Develop a whole family, whole system approach for victims, children and families

### What we have achieved:

Consultation with service users and agencies has been used to develop what we offer to victims; in the last year over 3,000 victims have accessed support from our commissioned and grant funded services.

**Over 2,000** Domestic Abuse victims were considered at high-risk of serious harm or murder

**1,275** 'High risk' victims accepted support

**305** 'High risk' victims were supported through court

**1,432** Housing interventions

**3,029** Telephone advocacy calls to support clients with Children Services

Domestic abuse is often hidden, victims may not realise they are being abused or may not know where to go for support. We therefore raise awareness of domestic abuse so victims know how to get the support they need. Working with partners we produce or share social media campaigns, offer training sessions, coordinate victim interviews, make videos and podcasts, link with local media and promote the work of partners.

Three examples are:



We introduced a 'rapid re-housing' model to provide a fast and safe supported moves for families who need to escape abuse and who would not be suited to refuge, for example some single adults, men with children or LGBT/Trans victims. This project compliments our Refuge offer of 27 units of self-contained supported accommodation.

Children are often 'hidden' victims, last year more than 200 children gained specialist support or counselling to overcome the effects of living with domestic abuse.

Perpetrators often have children and have more than one victim. It is therefore important to try to change perpetrator behaviour so they do not go on to abuse multiple partners and children. Over 40 male perpetrators accessed support last year to change their behaviour; programmes are held in groups or on a one to one basis.

We are proud of the work our agencies and services do to respond to domestic abuse and we will continue to develop our approach to improve the support survivors and children receive to enable them to live safely without abuse.

Other work tackling violence against women and girls has included funding a part-time community outreach worker to work with communities affected by Female Genital Mutilation (FGM) to raise awareness and increase access to support.

Quotes from survivors who have accessed support:

● Helpful, kind and understanding, always on hand to provide support, I was supported to make choices about what I wanted and throughout everything until I was safe. ●

● She listened and showed empathy and compassion when I expressed fear for my life. ●

● It sounds dramatic but the call changed my life. When someone says you have options and we can help you, it changes everything ●

### What we will do

- Listen to the voice of the survivor: use what survivors and partners have told us to develop services that meet their need e.g. supporting people better at court, gaining safe housing and supporting parents abused by their children
- Maximise investment in services for adult and child victims: actively seeking more funding to enable more preventative work and introduce new programmes based on recognised national good practice
- Meet the needs of the whole family: to break the cycle of abuse for children
- Support domestic abuse agencies to respond to the challenges of Covid;
- Introducing online and e-learning training to partner organisations to increase understanding of domestic abuse that will enable better support for families
- Ensure domestic abuse victims know where to get help, by using different ways of communicating with residents;
- Working across employers to support staff who suffer domestic abuse
- Implement the new Domestic Abuse Bill to provide additional safer accommodation and support.

### Links for further information:

<https://liverpool.gov.uk/communities-and-safety/crime-and-safety/domestic-abuse/>

<https://liverpool.gov.uk/council/strategies-and-policies/categories/community-safety>

<https://www.victimcaremerseyside.org/Default.aspx>

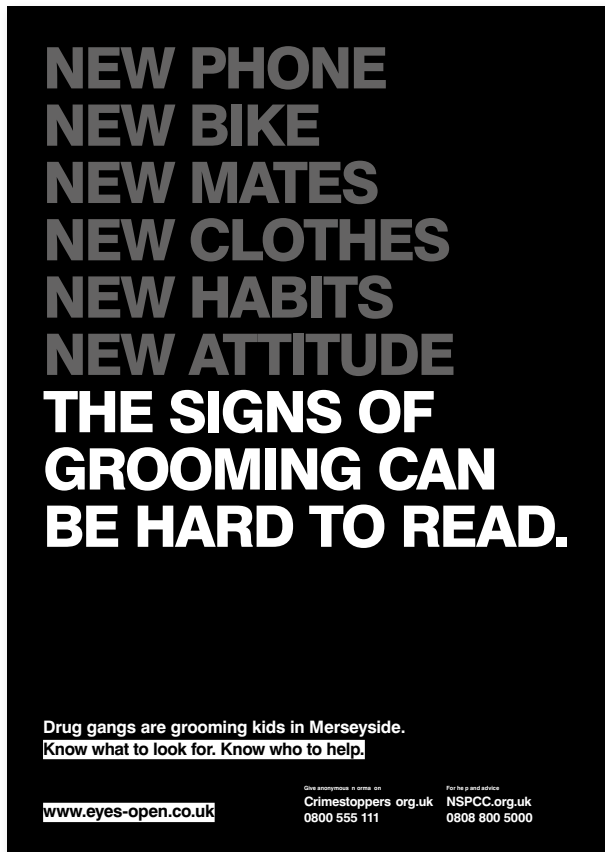
<https://liverpoolscp.org.uk/scp>

<https://liverpool.gov.uk/council/strategies-and-policies/categories/adult-services-and-health/>

## DISARM - Tackling serious violence and organised crime

DISARM works to the Home Office Serious Violence definition of specific types of crime such as homicide, knife crime, and gun crime and areas of criminality where serious violence or its threat is inherent, such as in gangs and county lines drug dealing by:

- increasing communities' resilience and sense of pride, confidence and safety in areas of Liverpool most affected by groups involved in gang related activity.
- reducing the impact of Serious and Organised Crime
- close collaboration and co-ordination with the Merseyside Violence Reduction Partnership



'Eyes Open' campaign poster

### What we have achieved:

- Total Knife crime was down 21% in December 2020 compared to December 2019
- Regular high visibility partnership days are organised throughout the year to engage with communities in the areas most affected by serious violence and gang issues.
- Agencies work together to identify and prevent young people on the cusp of criminality from being groomed into gangs.
- 'Cash for Communities' events have been run to promote and support community resilience and assets. Community members are asked to submit proposals for community activities and members of the community then decide collectively which activities are funded and implemented within their community.
- An analyst within children's services worked with partners on a multi-agency approach to criminal exploitation and support the development of a new Adolescent Service.
- We have supported the development of a knife crime rehabilitation programme for offenders.

### Other projects aimed at young people include;

- Detached Youth Work in target areas across partnership.
- School early intervention 'anti-gang' education programme
- Year 5 and 6 focus in schools using modules in 'SafeSkills' programme
- Year 6-7 transition years alternative education programme of support for young people involved in risk-taking behaviour.

- 'Think it through' detached work project and Girls Project for 13-19 year olds.
- Intergenerational skills exchange project with secondary aged young people
- Therapeutic Social Work Support and Action for Children Family Mentoring
- Targeted intervention, qualified training and development opportunities
- Supported the Our Merseyside #Bladefree campaign
- Eyes Open- The campaign to stop kids getting groomed by drug gangs.



### What we will do

- Continue work with the Merseyside Violence Reduction Partnership in embedding a public health approach to violence reduction through early intervention
- Work with Housing Providers to deliver campaigns in local areas about the exploitation of vulnerable adults or 'cuckooing'
- Use the Serious and Organised Crime Local Profile to target resources and action effectively
- Plan for changes in national policy and legislation

### Links for further information:

#### Eyes Open

<https://eyes-open.co.uk> (eyes-open.co.uk)

#### Serious Violence Strategy

<https://www.gov.uk/government/publications/serious-violence-strategy>

Home | Merseyside Violence Reduction Partnership (merseysidevrp.com)

#BladeFree - OurMerseyside

## Reducing Reoffending

A multi-agency strategic group is working to support the capabilities of prisoners to improve their health, employment, accommodation options, social and economic outcomes, reducing reoffending, and supporting prisoners' active contribution to lead full and active lives within the communities of Liverpool. In order to achieve this, the Partnership is:

- Identifying the challenges of prison leavers and how this affects their chances of successful reintegration into the community, their wellbeing, their family and the community.
- Providing opportunities that promote behavioural change.
- Working together to challenge current working practices and systems to address barriers to reducing offending.
- Working within communities to ensure there is a streamlined offer of pathways out of offending, depending on the needs of the service user.
- Ensuring coordination and effective engagement with services such as substance misuse to ensure transition from prison into the community.
- Building in systems to bridge the income gap for individuals who are released from custody and before their first benefit payment is received.
- Ensuring suitable, sustainable accommodation is available for prison leavers assisted by the Crisis project and prisoners who are still or were formerly tenants of registered providers and their families.
- Evaluate these changes to learn from them and demonstrate their value for different agencies.

- All prisoners to leave custody with an offer of good quality employment or training that is appropriate to their needs and includes wrap around support, if required, to enable their long term re-settlement into the community.

### What we will do

- A multi-agency hub and one stop shop for offenders leaving prison to help and support them with their initial integration back into the community. The hub staff will ensure that men leaving prison have suitable accommodation, benefits advice and employment opportunities as well as supporting the families of men leaving prison.
- Actively seek funding to support the system changes and broaden opportunities for people leaving prison.
- Creating various pre-recorded webinars for prospective employers to show the advantages of employing ex-offenders.

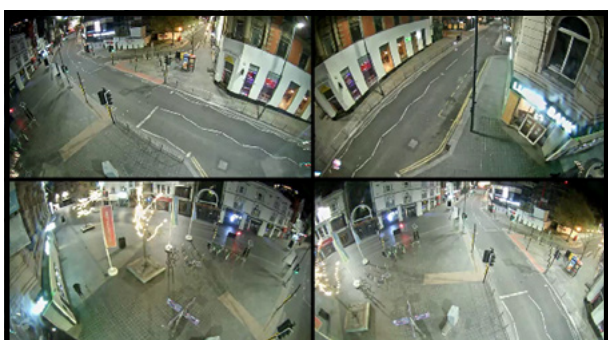
## City Centre

The City Centre Joint Agency Group (CCJAG) brings together various parts of the local authority (Licensing, Safer, Stronger Communities, Streetscene, City Watch, Public Health), Merseyside Police, Liverpool BID, Liverpool One and representatives from the Student community to work together in partnership to reduce the levels of crime and disorder in the City Centre.

### What we have achieved

#### Improved CCTV

The CCJAG has commissioned 10 new digital cameras in areas supporting the Night Time Economy (NTE). This will see hotspot areas given cameras with better image quality and coverage. The cameras will be connected to the Council's City Watch control room, which links directly with North West Ambulance Service, Merseyside Fire and Rescue and Merseyside Police, enabling these key partners to see incidents first hand as they occur and deploy an appropriate response.

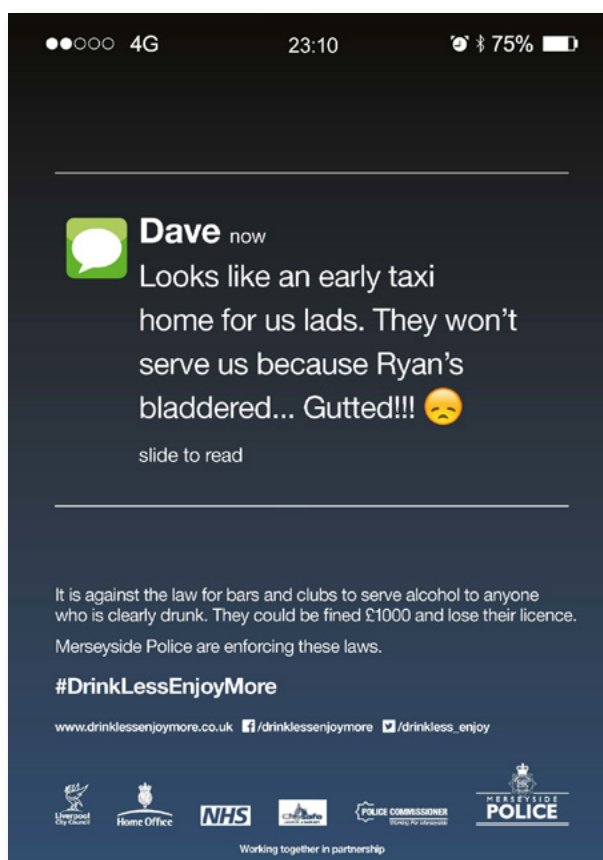


Improved CCTV in Liverpool city centre

#### Safer Night Time Economy

The use of Taxi Marshals at city centre taxi ranks have been extended to include the increasingly busy Hannover Street taxi rank, and have provided confidence and reassurance to both members of the public and the hackney carriage trade alike who use this rank. This initiative has led to reductions in crime and disorder, despite year on year increases in numbers of visitors to the area.

The 'Drink Less Enjoy More' campaign (DLEM) supported bars and clubs to comply with the law and refuse to serve alcohol to those who are excessively drunk. DLEM provides robust bar staff training alongside proactive social marketing and active monitoring of premises to ensure that alcohol is only sold responsibly. In doing it contributes to providing a safe environment for visitors to the night time economy whilst also reducing the risk of excessive drunkenness. In 2019/20 the bar



'Drink Less Enjoy More' campaign poster

staff training delivered saw a total of 78 pubs/bars and 9 hotels engage with DLEM. This resulted in 1,119 bar staff across the city trained to refuse service of alcohol to intoxicated patrons. A further 109 pubs/bars took receipt of a DLEM training video designed to allow Designated Premises Supervisors to work through the guidance with their own staff teams.

A campaign to tackle sexual violence in the night time economy aims to change the culture of the night time economy from one of a level of acceptance of sexual assault as 'the norm' to something that is not to be tolerated, is criminal and will be acted upon. A "Know means No" sexual violence campaign used posters in bars and clubs,

social media and a launch that attracted radio interviews and coverage elsewhere in the media. The messages were that victims are taken seriously, that any unwanted sexual contact is sexual assault which can put you in prison, men can be victims as well as women, and consent can be withdrawn at any time. In addition to the awareness campaign more than 150 nightlife workers were trained in 11 venues, where materials were displayed to encourage users of the premises to report incidents. The training has also been provided to student leaders, and is being rolled out to front line police officers and other organisations that operate in the city centre.



## Cleaner Streets

A main concern expressed by residents, businesses and visitors, as highlighted by a perception survey for the city centre, is the cleanliness of the city streets. In response the CCJAG, with funding from the Late Night Levy, made a 50% contribution towards a Schmit City Jet 3000 street washing machine.

The machine is used to wash down the pavements in the city centre especially after the busy weekend period. The new machine enables the street cleansing team to clean a much larger area allowing the team to clean more streets and returning them to a presentable and clean condition far quicker.



## Improved Emergency Response and Support

Most recently members of the CCJAG, Mersey Water Safety Forum and charities including Canal and River Trust, Samaritans and Royal National Lifeboat Institution have teamed up to commission unique signs along the River Mersey and behind the Royal Albert Dock Liverpool aimed at helping prevent suicides and other tragic incidents that may cause someone to enter the River Mersey.



The signs, which each feature a different number on them, are aimed at providing all emergency services with a more precise location of where an incident is or has taken place. This means the response time should

be dramatically reduced. In addition to this, Samaritans have designed a bespoke crisis sign with their phone number for people to call if they're in crisis.

## What we will do

- The CCJAG will continue to build on the above work and in addition working on a number of key initiatives that include:
- supporting businesses through the current Covid-19 pandemic
- preventing sexual violence in the night time economy
- supporting the delivery of 'First Step from the Street' solutions for people at risk of Rough Sleeping and other support initiatives to address the needs of people including rough sleeping, begging and street drinking,
- the delivery of effective knife crime interventions,
- promoting Liverpool city centre's Purple Flag status,
- tackling hate crime specific to the city centre and
- developing effective links with hotel and apartment let businesses to reduce crime.

## Links to Strategies / websites etc for further information:

<https://drinklessenjoymore.co.uk>

<https://liverpool.gov.uk/business/licences-and-permits/entertainment-and-alcohol-licences/personal-licence/knockback-drink-less-enjoy-more-training/>

## Hate Crime

### What we have achieved

The Hate Crime Joint Agency Group (HCJAG) works in partnership to reduce high risk hate crime and repeat victimisation through a case management approach. The group supports victims of hate crime through practical security and emotional reassurance, for example having security measures installed such as installation of polycarbonate windows and locks, installing cameras and providing safety advice to victims. The Liverpool Hate Crime Strategy was launched in July 2020 and is now being delivered.

### National Hate Crime Awareness Week 2020

“Behind the Scenes” Webinar Series: This year’s contribution to Hate Crime Awareness Week 2020 captured “Behind the Scenes” work of partners to gain a greater understanding of how we all operate and collectively work to support the most vulnerable people of our city. Behind the Scenes Webinars were hosted by our partners including Merseyside Police, Onward Housing, Anthony Walker Foundation, Crown Prosecution Service and the Our Liverpool Team.

Citysafe funded ‘Stop Hate Start Debate’ to increase knowledge and understanding of LGBTQ hate crime and how to report amongst teachers and students at Liverpool City College. This is producing creative videos using language and media to encourage students and teachers to have an open conversation about LGBTQ hate crime issues.

### What we will do

- ‘Challenge it, Report it, Stop it’ - challenge attitudes and behaviours and encourage early intervention.
- Education – programmed workshops in schools both primary and secondary, initially in target areas.
- Regular citywide coordinated partnership days of action to raise awareness throughout the year.
- Continue to provide security measures to properties measures so residents feel safe in their homes, including installation of polycarbonate windows and locks, installing cameras and providing safety advice to victims.
- Agencies will continue to work in partnership with the Support Services Anthony Walker Foundation, Daisy UK and Citizens Advice Liverpool to raise awareness of Hate Crime and support for victims.
- Encourage third party reporting through targeted communications.
- Source any funding opportunities to support the Hate Crime Action Plan

## Anti-social Behaviour

The aim of the group is to work with partners to reduce Anti-social Behaviour (ASB) across Liverpool improving community cohesion and resilience. The multi-agency group target resources based on intelligence across hot spot locations to provide early intervention and positive activities to engage young people and divert them from participating in crime and ASB.

### What we have achieved:

- Continued to operate and target resources throughout the pandemic.
- Installed security measures to provide security for residents so they feel safe in their homes; the measures can include security trellis, installation of polycarbonate windows and locks, installing cameras and providing safety advice to victims.
- Secured funding for Merseyside Fire and Rescue Service Street Intervention Team - a project to engage with young people who could and are involved in Crime and Disorder such as ASB and deliberate fire setting.
- Tackled increased anti-social use of off-road bikes
- Prevented ASB and fly tipping around the mischief period
- Tackled ASB in private rented properties through the Private Sector Housing Service, working with landlords, agents and other property owners. In 2020-21 over 700 referrals were received and 98% of these satisfactorily resolved.

### What we will do

- Challenge perpetrators of ASB and support vulnerable victims
- Continue to tackle increased anti-social use of off-road bikes
- Continue to prevent ASB and fly tipping around the mischief period
- Days of action to reduce ASB in hotspot locations
- Explore opportunities to signpost victims / offenders of ASB to support agencies
- Leaflet campaigns
- Utilise the use of multi-agency social media platforms to send ASB and safety messages
- Source funding to provide early intervention and positive activities to engage young people
- Direct the work of the Fire Service's Street Intervention Team and local detached Youth Worker Teams to hotspot locations.
- Through the Private Sector Housing Service continue to ensure that there is an appropriate response and ownership by landlords and agents to ASB matters in private rental properties.
- Use Public Spaces Protection Orders (PSPOs) to reduce the impact of anti-social behaviour within our communities. They can include measures such as alley gates restricting access or imposing conditions which apply to everyone to deal with persistently anti-social individuals or groups whose behaviour has a detrimental effect on the local community's quality of life. We will continue to consult with the public on any PSPOs within the City.

## Preventing Extremism

### What we have achieved

Prevent is about safeguarding and supporting those vulnerable to radicalization. We have used a range of measures to challenge extremism including:

- Supporting people who are at risk of being drawn into terrorist or extremist activity through the multi-agency Channel process. As part of a regional pilot, we are coordinating channel process to safeguard the most vulnerable, having taken over the role from Police in 2019. Indeed, the Liverpool are supporting Channel case management for the eight other local authorities of Merseyside and Cheshire.
- Working with and supporting community groups and social enterprise projects who provide services and support to vulnerable people. We commissioned a range of partners to deliver targeted Prevent funded projects. Last year eight providers were funded to deliver projects to a range of audiences in amounting to over 300 sessions delivered to more than 5,000 participants.
- Working with faith groups and institutions to understand their concerns and assist them in providing support and guidance to their community.
- Supporting local schools and partner agencies through engagement, advice and training. This has included the delivery of 184 training sessions to 3,855 participants last year and the commissioning of innovative, award winning projects in schools, such as OddArts drama group.

### What we will do

Continue to build links with community, voluntary and faith groups to build a more nuanced picture of the risks, including from the Far Right.

Develop our training, engagement and project work across the city.

### Links to Strategies / websites etc for further information:

We are creating a webpage for Intranet (and possibly Internet)

Action Counter Terrorism (ACT early)  
[www.actearly.uk](http://www.actearly.uk)

Let's Talk About It [www.ltai.info](http://www.ltai.info)

Educate Against Hate [www.educateagainsthate.com](http://www.educateagainsthate.com)

Prevent Duty Guidance [www.gov.uk/government/publications/prevent-duty-guidance](http://www.gov.uk/government/publications/prevent-duty-guidance)

Channel Duty Guidance [www.gov.uk/government/publications/channel-guidance](http://www.gov.uk/government/publications/channel-guidance)

Prevent referral training [www.elearning.prevent.homeoffice.gov.uk/preventreferrals](http://www.elearning.prevent.homeoffice.gov.uk/preventreferrals)

## Community cohesion

### What we have achieved

The Partnership has focused on three geographical areas which were identified as priorities through local knowledge and hate crime statistics. Multi-agency groups deliver partnership days, information leaflets and drop ins, faith events, hate crime projects with schools and the promotion of Stop Hate UK – a way of reporting hate crime which is an alternative to the police. Examples include:

The Everton, Anfield and County Cohesion Group has delivered projects with young people, schools and community groups. The Ahmadiyya Muslim Community have been involved with their young people taking part in Operation Clean Sweep which saw them cleaning up part of the area and then attending a football match at Goodison Park. Partners have carried out numerous activity days – promoting Stop Hate UK and delivering a whole programme of activities and events for National and Regional Hate Crime Weeks of Action. We have secured funding for various projects to address hate crime and generally ensured that the counter extremism agenda stays in the spotlight.

The Picton Cohesion Group has raised awareness of the different cultures across the whole community, listened to and reassured residents, helped to integrate the young people through the dedicated detached team and to educate the new communities with regard to being a good neighbour and living in Liverpool.

In Croxteth, Norris Green and Fazakerley Foundation For Peace has delivered a “Small Steps For Peace” Project with primary school children and their families in 7 schools, which was really well received.

### What we will do

- This work will continue to develop, as well as new work in Kensington and Fairfield Ward – this will be a tailored programme of partnership work to increase community cohesion and resilience and help to create a safer, stronger community. Consequently this should improve residents' quality of life, reassure the community and allow greater community ownership, help newcomers to the area better integrate into the community and help to protect the most vulnerable residents in the community.

## Student Safety

### What we have achieved

- Reduced crime against students – 31% decrease since 2016/17 academic year
- Drink Less Enjoy More Campaign - promoted responsible choices relating to alcohol, featuring videos in licenced premises; information on display in key student areas of universities and health stands at student events
- Operation Fresher – in 2017, 2018 and 2019 Merseyside Police led an operation to successfully reduce student related crime at the start of the academic year, which is a time when students are more likely to be vulnerable. An enhanced police presence in key locations ensures that students feel safe and have a better first experience of the city. This operation was not required in 2020 due to COVID-19 restrictions in force at that time.
- Preventing sexual violence – the universities continue to work on embedding processes for disclosure and support for students, external links to specialist agencies, disciplinary regulations and increasing the availability of reporting mechanisms and understanding of what constitutes a criminal offence
- Coronavirus – extensive support was put in place to ensure students could access food and other necessities during periods of quarantine.
- Coronavirus – universities worked with Public Health and GPs to manage student community outbreaks and develop a Community Pledge outlining what is expected from students in terms of being a good citizen in the current climate.

- Coronavirus – Liverpool Student Homes ensured that information was shared with students and landlords on a dedicated Coronavirus website page, and also organised regular landlord briefings to share best practice with a focus on working with landlords to identify any gaps to ensure students have the correct support when they arrive.

### What we will do

- To inform, support and engage with students regarding coronavirus but also work with Merseyside Police to understand and step up enforcement of law.
- Promote responsible drinking and raise awareness and identifying themes of substance misuse
- Prevent sexual violence in the student community
- Achieve Purple Flag status for universities within the city

## Other Work

As part of our holistic approach to community safety, there are a number of other issues which we are addressing as a partnership in order to make our communities stronger and safer.

### No Recourse to Public Funds

Liverpool has a large and varied EU migrant population and has been an asylum dispersal area since 2000. No Recourse to Public Funds (NRPF) is a condition imposed on someone due to their immigration status. It prohibits access to certain benefits and homelessness assistance. Most migrants who are non-EEA nationals, with temporary permission to remain in the UK, have NRPF. People who are NRPF may be vulnerable to exploitation or drawn into criminality. Many are destitute.

The intersection of the Covid-19 pandemic with changes in the immigration system following Brexit is likely to have longer term impacts with a potential large increase in the cohort of people who are NRPF.

Many local community groups provide vital supplies such as food and temporary accommodation. The pandemic has also led to the creation of more informal groups providing support to those with NRPF, such as Liverpool Migrants Solidarity Group and various mutual aid groups.

### What we will do

- Partnership work has been developed through the Our Liverpool strategy. An NRPF workshop was delivered in January 2021 with a view to developing and endorsing an action plan.
- We will develop and define an overall strategy and policy in relation to the issue of NRPF, including scoping need and developing appropriate service provision.
- We will develop online and face to face quality NRPF training for key frontline staff.

### Modern Slavery and Human Trafficking

Modern slavery is an umbrella term, encompassing human trafficking, slavery, servitude and forced labour. In Liverpool, and the wider City Region, we are working to address the issues under 4 broad themes; identifying and referring victims; supporting victims, prevention and community safety, and supply chains.

### Achievements

- We've reviewed our operational preparedness for major incidents and have held a half day review with partners.
- Alongside Stop the Traffik Liverpool we hosted the Freedom Bus -The double decker bus is branded with anti-slavery messages and promotes the national Modern Slavery Helpline which people can call to report any concerns they have about individuals who may be enslaved or trafficked.

- Commissioned research on access to services through the University of Liverpool's Interchange Programme.
- Liverpool City Council published our first Modern Slavery and Human Trafficking Transparency Statement 2019/20.
- Awareness raising at Safeguarding Boards.



Freedom Bus

### Links - Our Liverpool Strategy

Strategies and policies - Liverpool City Council

NRPF Connect Who has no recourse to public funds (NRPF) | NRPF Network

### What we will do

- Support for those with 'No recourse to public funds' (NRPF) status, whose plight has worsened due to COVID-19, including improving understanding the links between MSHT and homelessness
- Provision of good quality training on supporting victims, disrupting and preventing MSHT
- Understanding and mitigating the potential impact of Brexit by working with support agencies
- Developing a 'make every contact count' approach across agencies to spot the signs and refer on MSHT
- Develop a collaborative forum to support organisations in the development and annual review of their modern slavery statements, the mapping of supply chains, and the sharing of best practice.

#### Identifying and referring victims

- ➔ Referral pathways and processes
- ➔ Information for professionals
- ➔ Victim reception centres
- ➔ Major incident plan

#### Supporting victims

- ➔ Referral pathways and processes
- ➔ Supporting survivors post-NRM
- ➔ Recognising and safeguarding individuals with a history of MSHT

- ➔ Staff training
- ➔ Partnership working
- ➔ Data collection
- ➔ Case studies

#### Prevention and community safety

- ➔ Awareness & support for those at risk of exploitation
- ➔ Public information and advice
- ➔ Supporting EU residents to get settled status

#### LCC supply chains

- ➔ MSHT Transparency Statement
- ➔ Potential training for suppliers
- ➔ Increased human rights due diligence
- ➔ New whistleblowing policy